

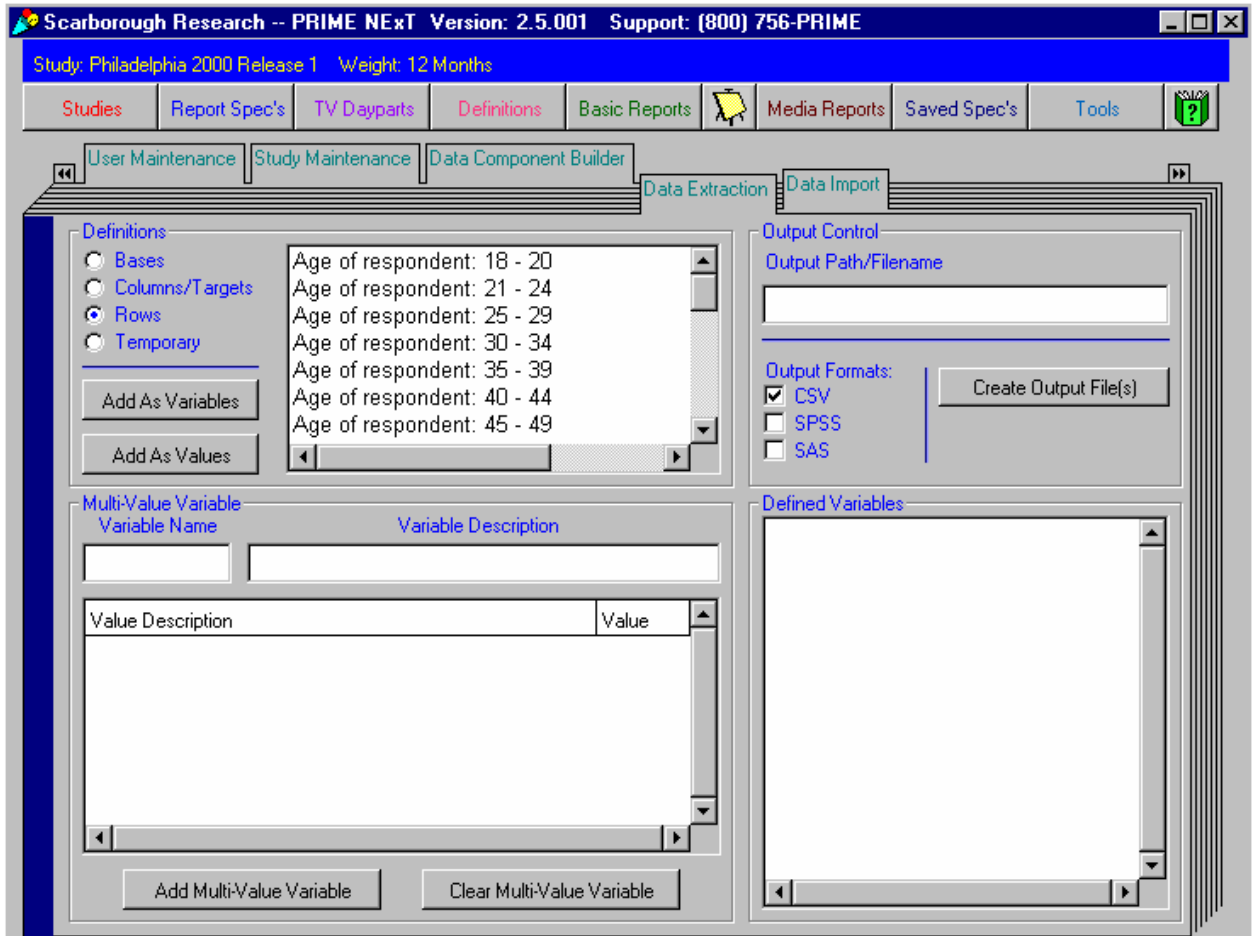
Data Extraction and Import

Data Extraction

The Data Extraction feature is used to extract respondent data from a PRIME NExT database for use with other data access and analysis software. You select data for extraction using standard report specification facilities.

Extraction Procedure

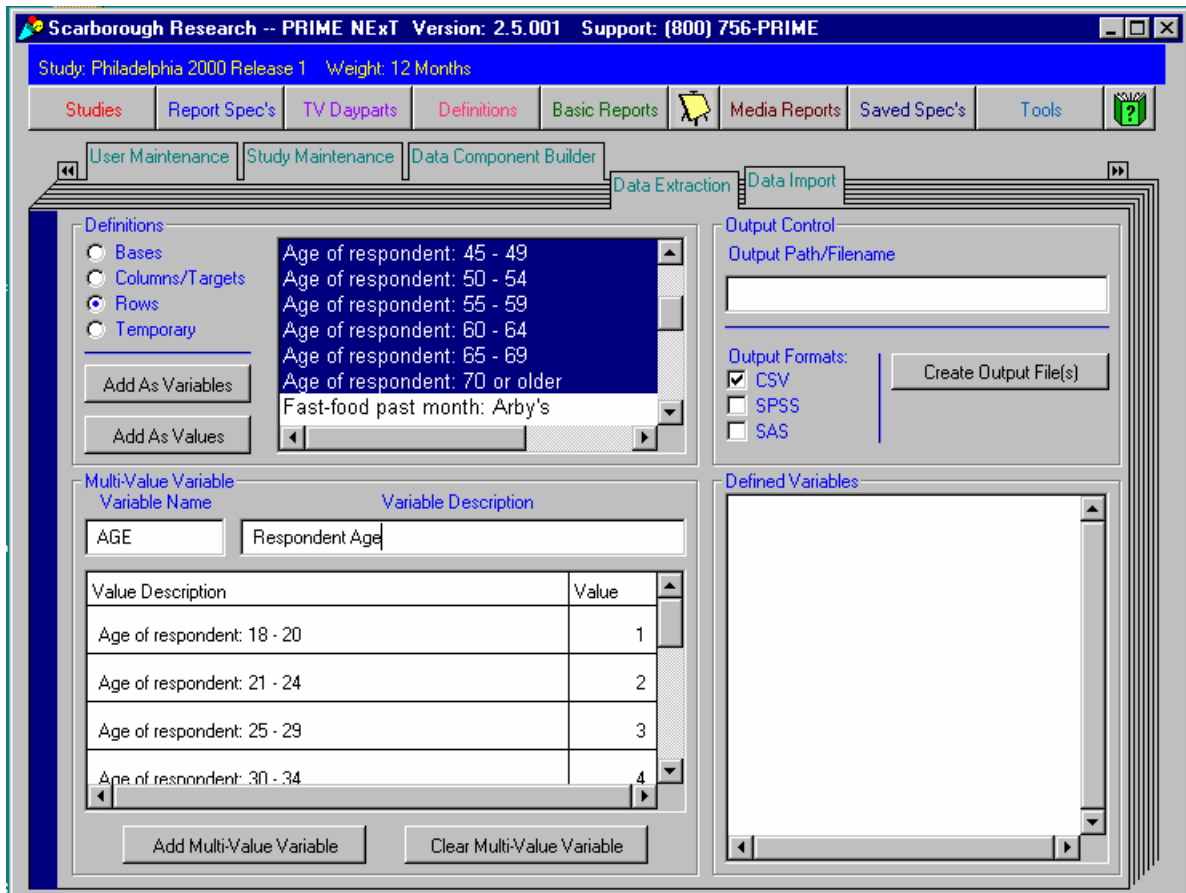
1. Click on the Data Extraction tab.



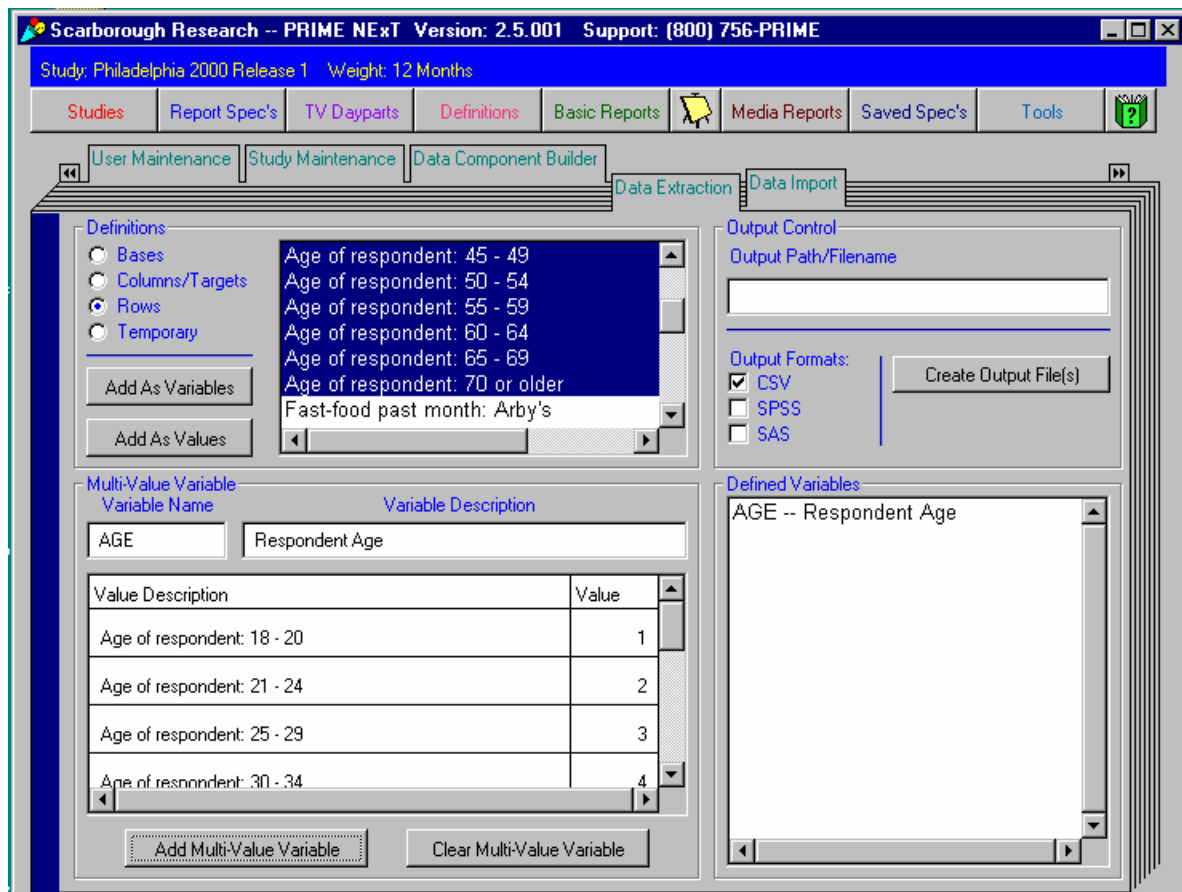
2. Decide how you want to define variables: using single-value data (e.g., demographics) or using data that has multiple values (e.g., ate at which restaurants).

Using Single-value Data

3. For single-value data (e.g., demographics), click the Add as Values button.



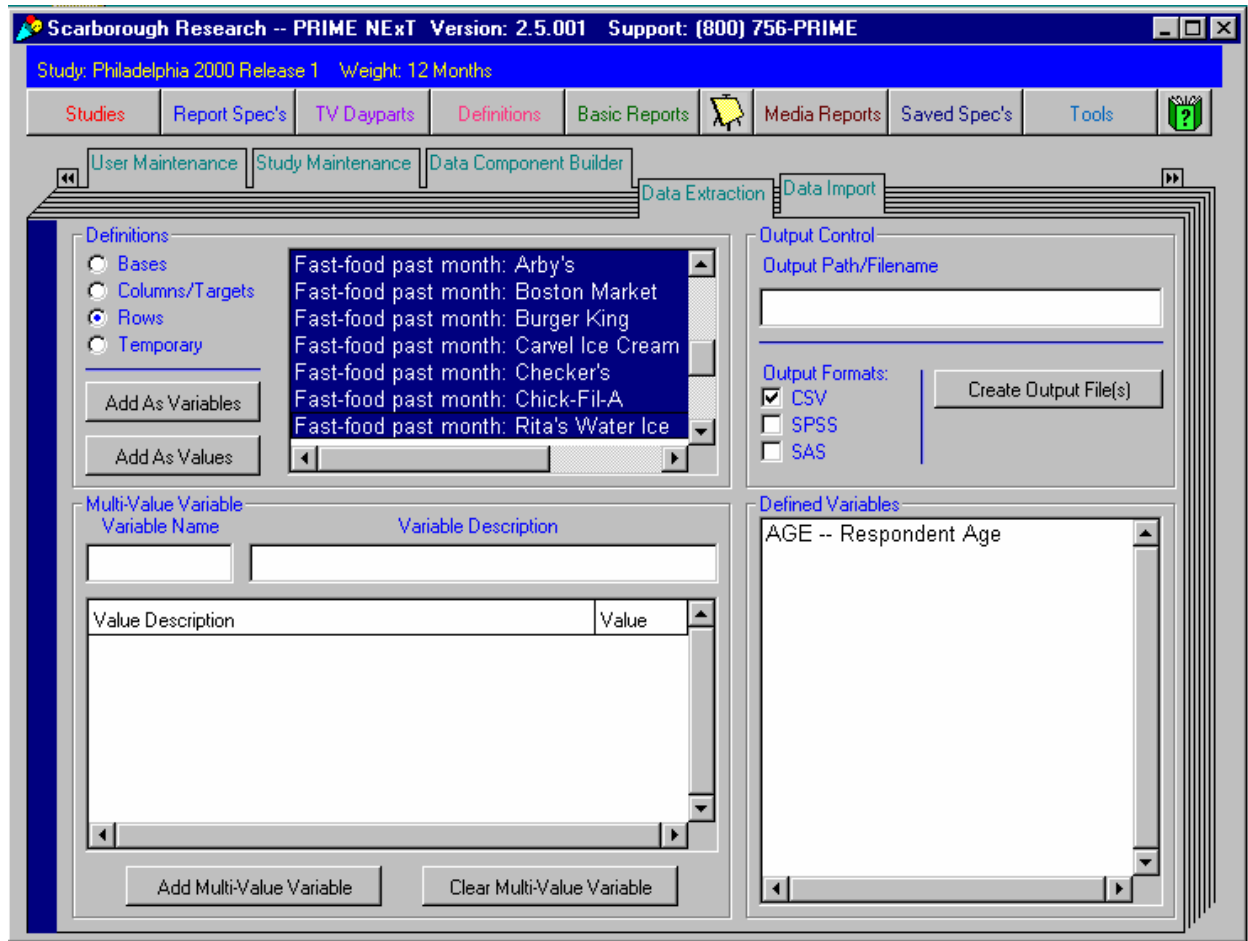
4. Click the Add Multi-Value Variable button.



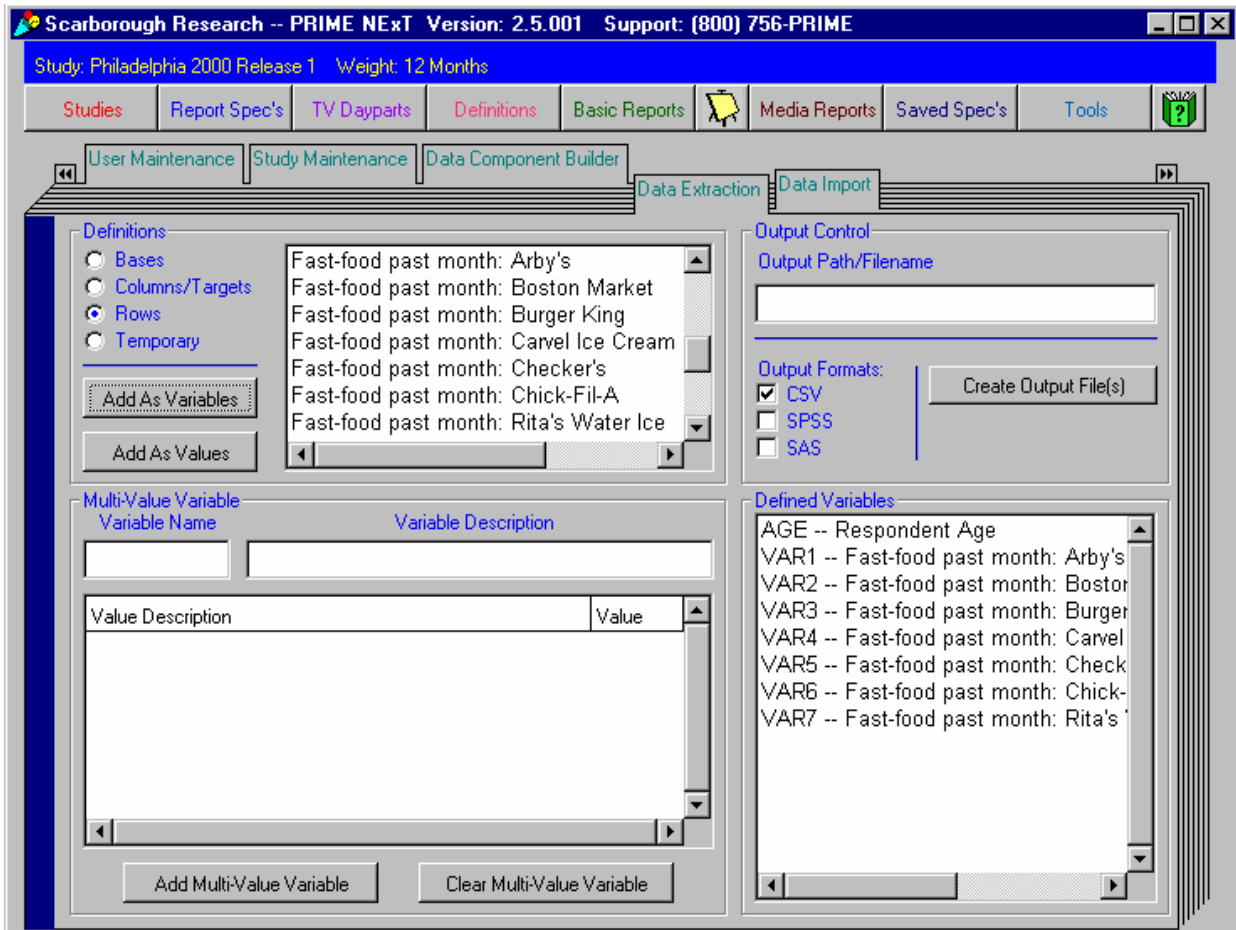
5. To clear the area, click the Clear Multi-Value Variable button.

Using Data with Multiple Values

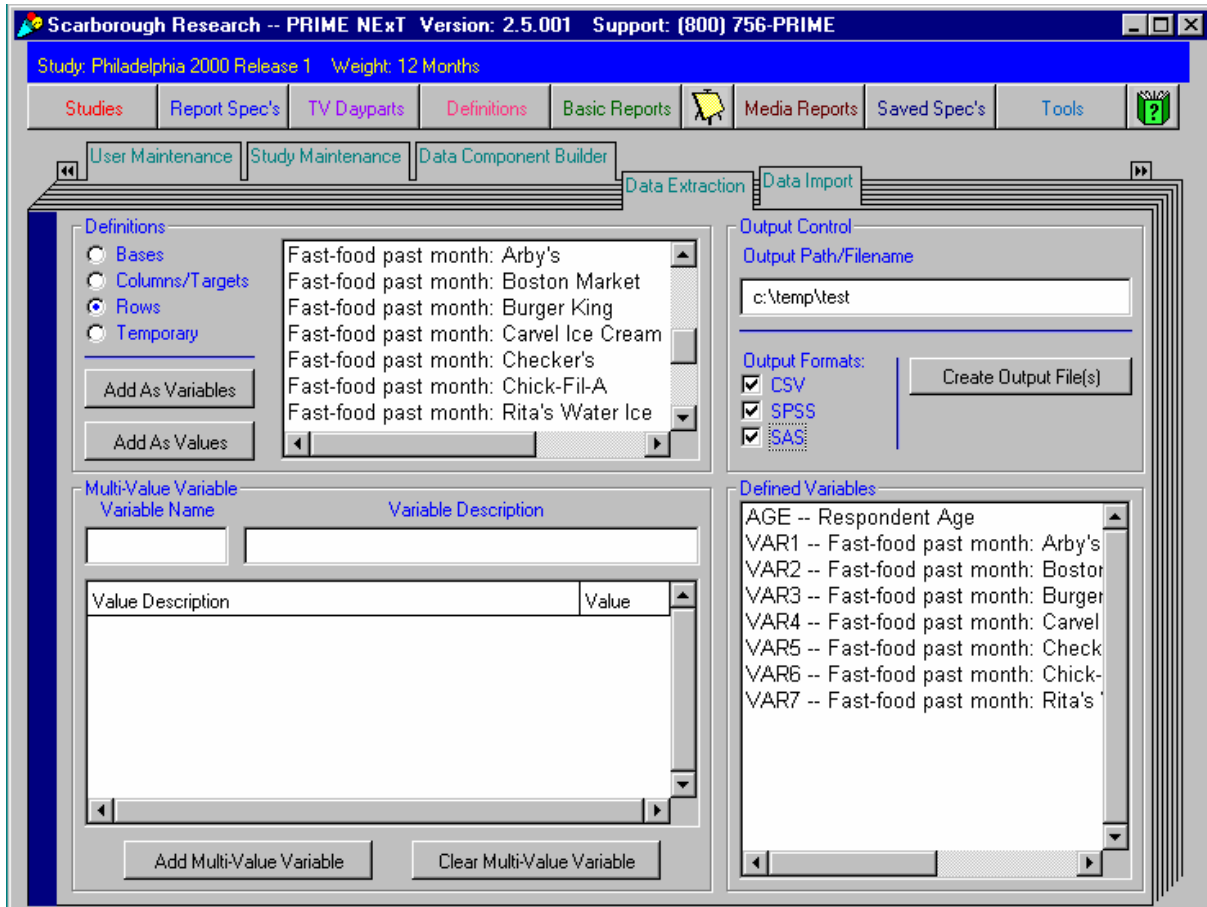
6. Select the variables you want to use.



7. Click the Add as Variables button.

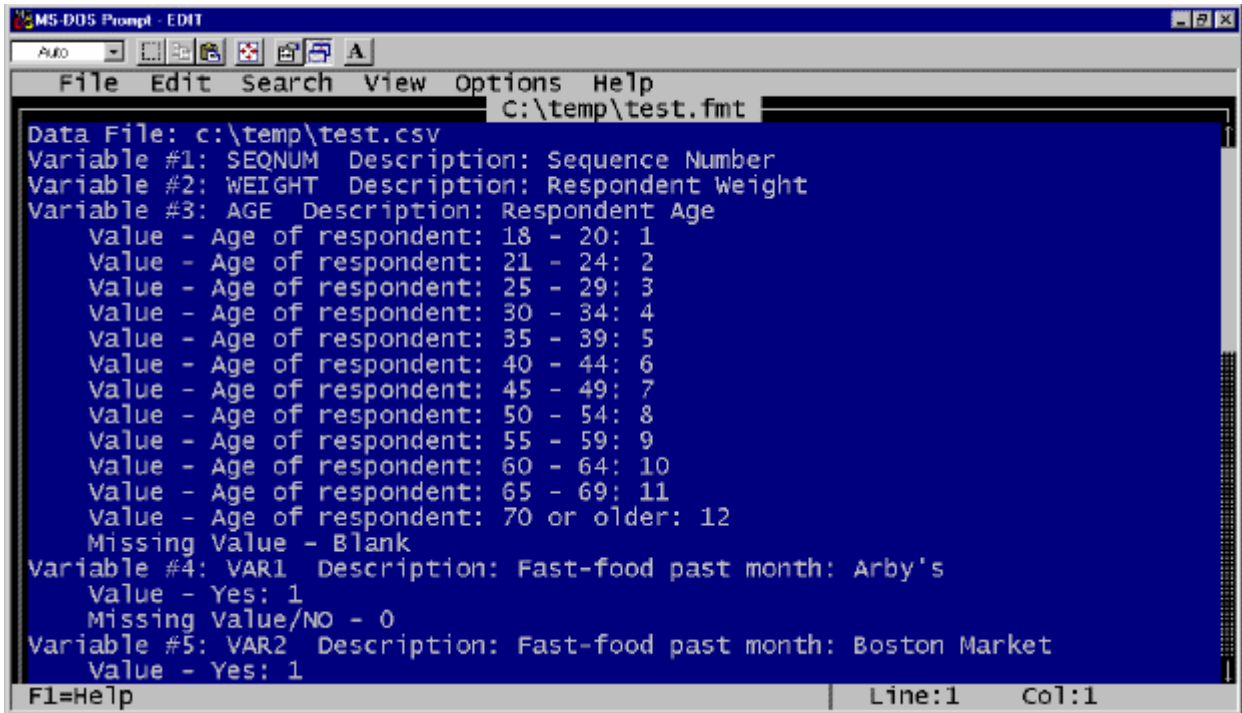


8. In the Output Control area, specify the output path.



9. Click the Create Output File(s) button. PRIME NExT creates sets of output files.

This is a sample format file:



```
MS-DOS Prompt - EDIT
File Edit Search View Options Help
C:\temp\test.fmt
Data File: c:\temp\test.csv
Variable #1: SEQNUM Description: Sequence Number
Variable #2: WEIGHT Description: Respondent Weight
Variable #3: AGE Description: Respondent Age
Value - Age of respondent: 18 - 20: 1
Value - Age of respondent: 21 - 24: 2
Value - Age of respondent: 25 - 29: 3
Value - Age of respondent: 30 - 34: 4
Value - Age of respondent: 35 - 39: 5
Value - Age of respondent: 40 - 44: 6
Value - Age of respondent: 45 - 49: 7
Value - Age of respondent: 50 - 54: 8
Value - Age of respondent: 55 - 59: 9
Value - Age of respondent: 60 - 64: 10
Value - Age of respondent: 65 - 69: 11
Value - Age of respondent: 70 or older: 12
Missing Value - Blank
Variable #4: VAR1 Description: Fast-food past month: Arby's
Value - Yes: 1
Missing Value/NO - 0
Variable #5: VAR2 Description: Fast-food past month: Boston Market
Value - Yes: 1
F1=Help Line:1 Col:1
```

This is an actual data file:



```
MS-DOS Prompt - EDIT
File Edit Search View Options Help
C:\temp\test.csv
1,1240,1,0,1,0,0,0,1,1,0,0,0,1,1,1
2,1310,9,0,0,0,0,0,0,1,0,0,0,1,0,0
3,945,12,1,1,1,0,0,0,0,0,1,1,0,0,0
4,800,5,0,0,1,0,0,1,1,0,0,0,1,1,0
5,920,5,0,1,0,0,0,0,0,0,0,0,1,1,0
6,320,7,0,0,1,0,0,0,0,0,0,0,0,0,0
7,1615,8,1,1,1,0,0,0,1,0,1,1,1,1,0
8,490,5,1,1,1,0,0,1,0,0,0,0,0,1,0
9,700,5,0,0,0,0,0,0,0,1,0,0,0,0,0
10,635,5,0,0,1,0,0,0,0,0,0,0,0,0,0
11,265,12,0,0,0,0,0,0,0,0,0,0,0,0,0
12,1535,4,0,0,1,0,0,0,1,0,0,1,0,1,0
13,1440,7,0,0,0,0,0,0,0,0,0,0,0,0,0
14,390,11,1,1,1,0,0,0,0,0,0,0,0,0,0
15,900,5,1,0,0,0,0,1,1,0,0,0,1,1,0
16,1130,3,0,0,0,0,0,0,0,1,0,0,0,0,0
17,1715,2,0,0,0,0,0,0,0,0,0,0,0,1,0
18,3160,12,0,0,0,0,0,0,0,0,0,0,0,0,0
19,1285,11,0,0,1,0,0,0,1,0,0,0,1,0,0
20,1545,7,0,0,1,0,0,0,1,0,1,0,0,0,0
21,550,10,0,0,0,0,0,0,0,0,0,0,0,0,0
22,670,6,0,0,0,0,0,0,0,0,0,0,0,0,0
F1=Help Line:1 Col:1
```

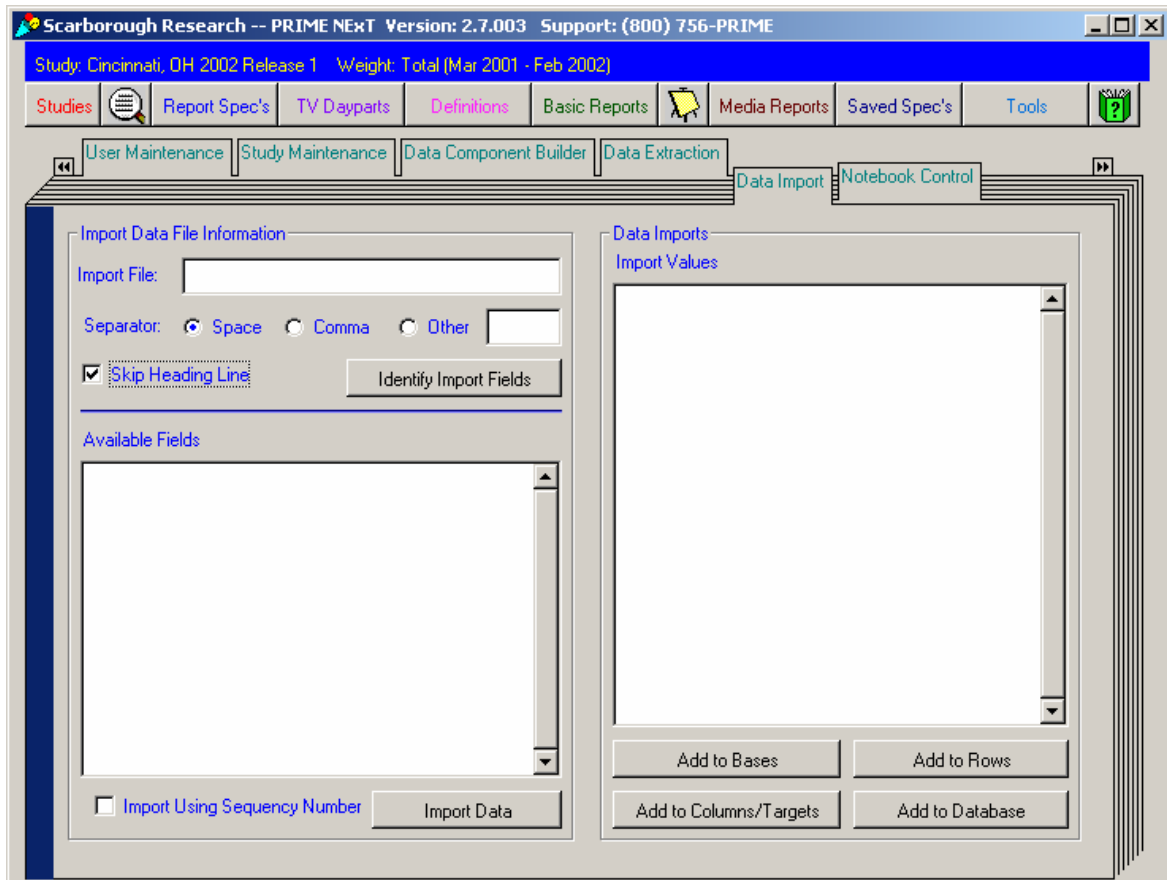
Note: If the Data Extraction feature is not available to you, you will see a message asking you to contact your PRIME NEXt representative.

Data Import

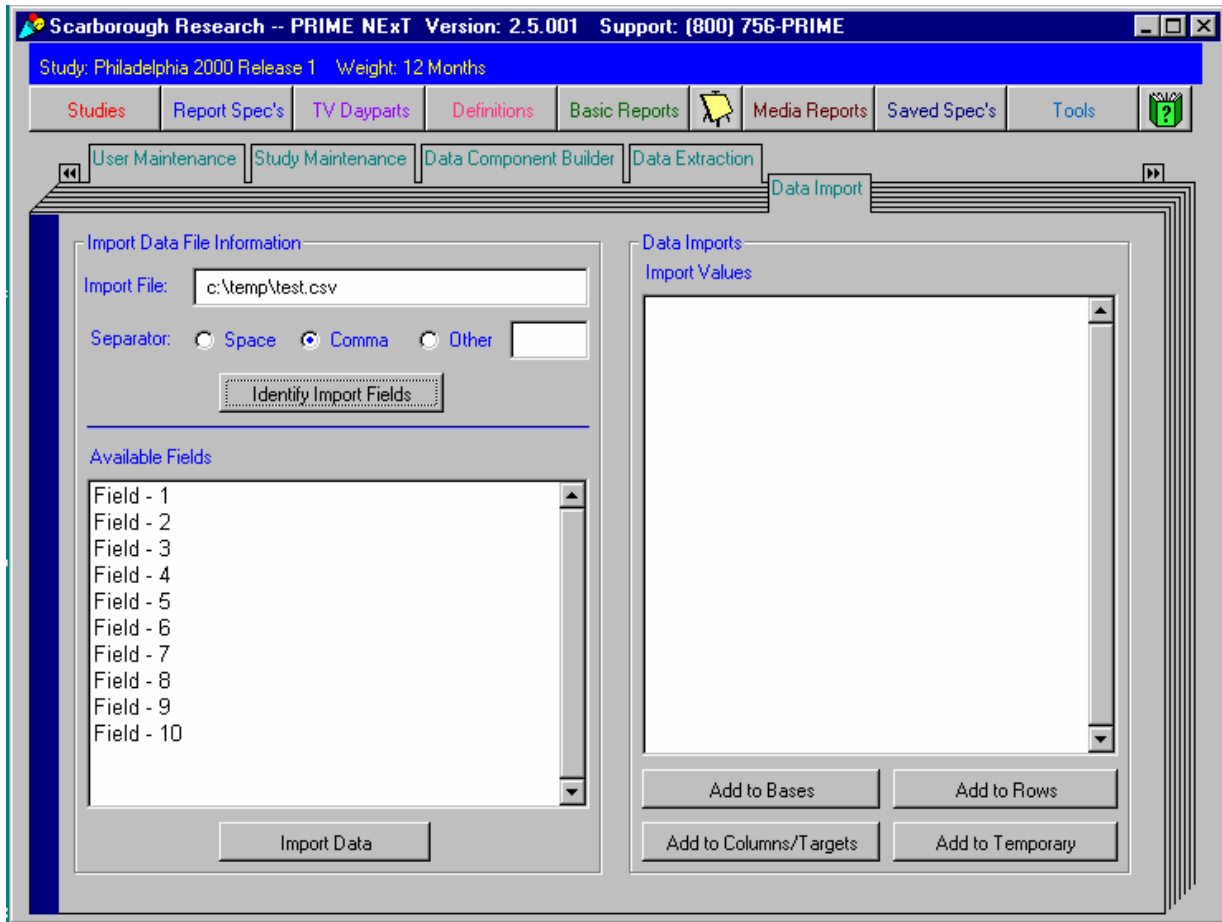
The Data Import feature is used to import data into a PRIME NEX T database from any external data access and analysis software.

Import Procedure

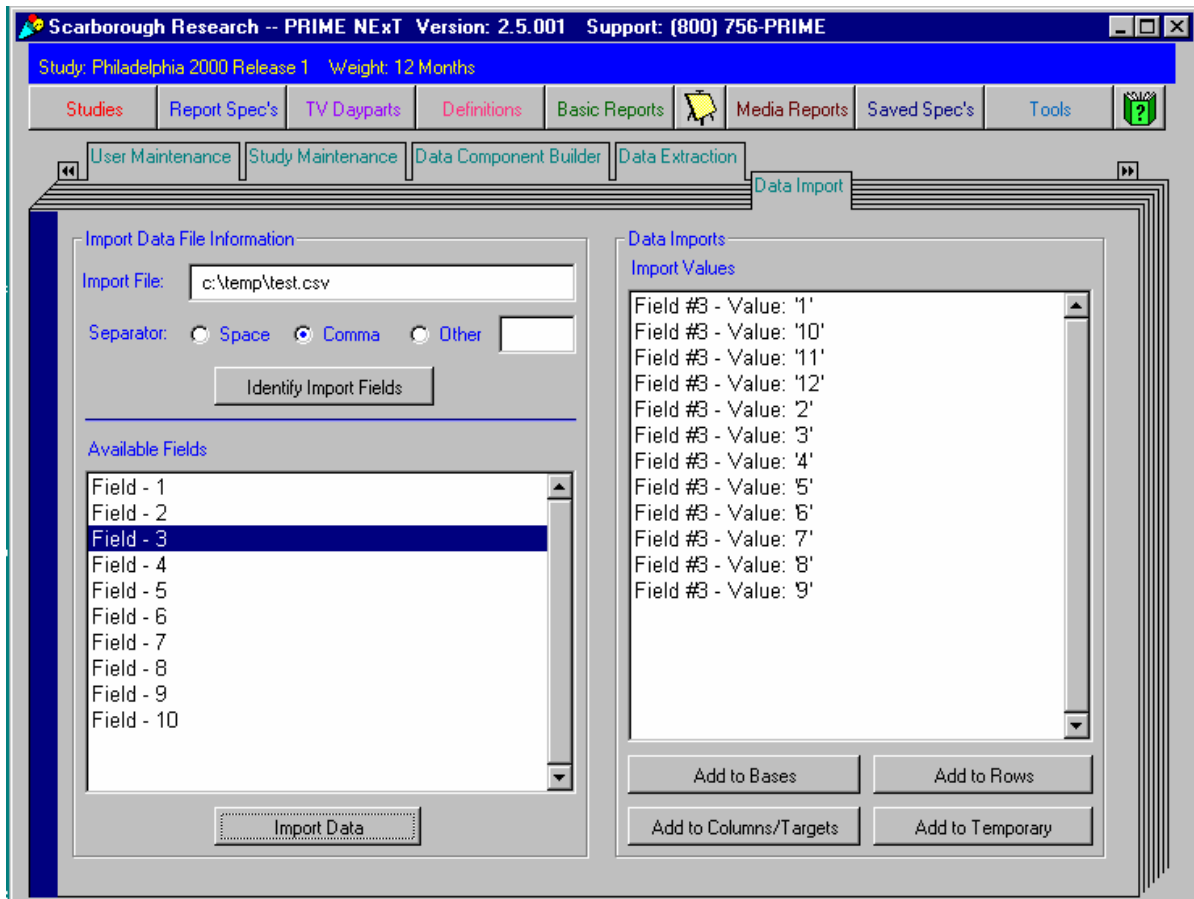
1. Click on the Data Import tab to display the import screen:



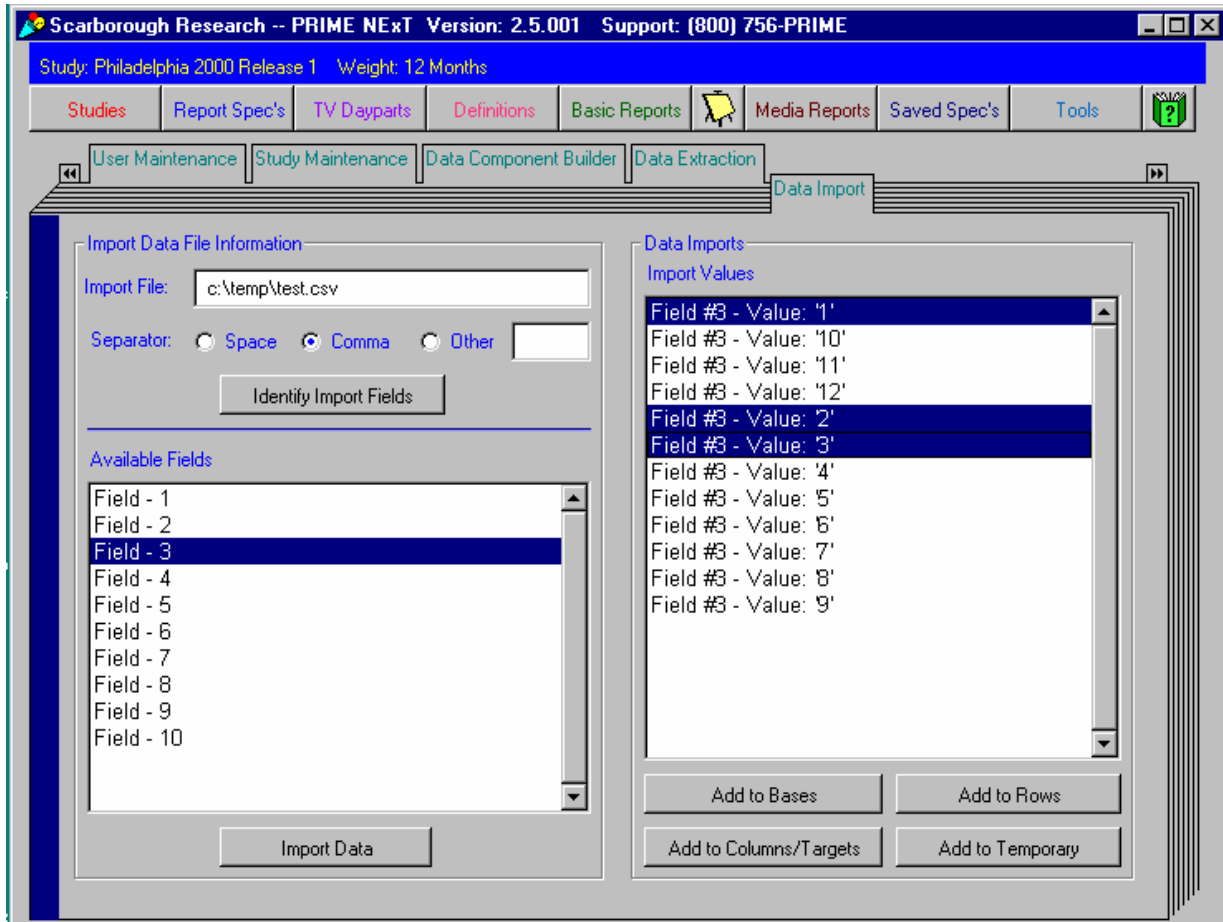
2. In the Import Data File Information area, enter the name of the import file and specify how the data is separated. Then click the Identify Import Fields button.



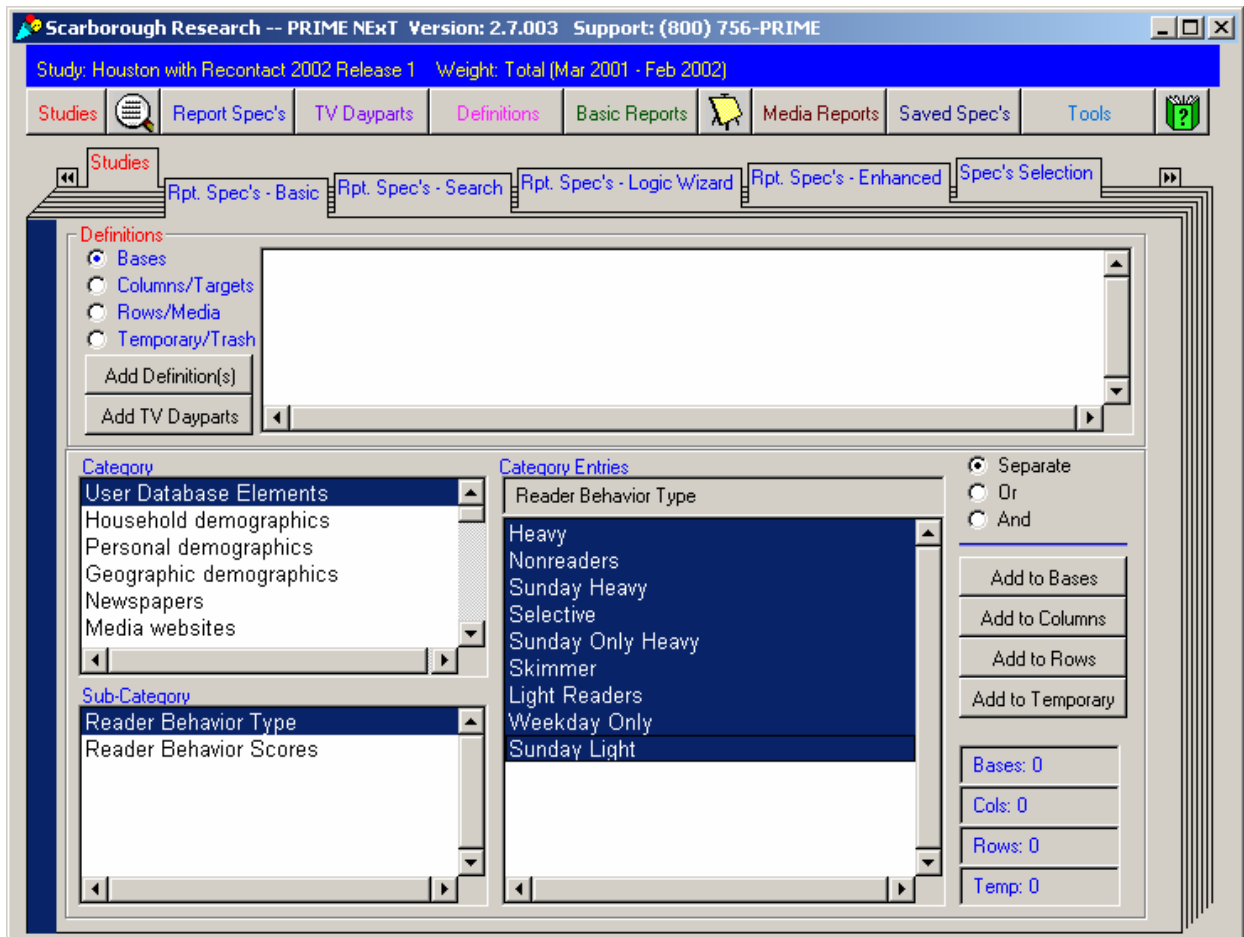
3. In the Available Fields area, select the fields you want and click the Import Data button. The imported data is listed in the Data Imports area on the right side of the screen.



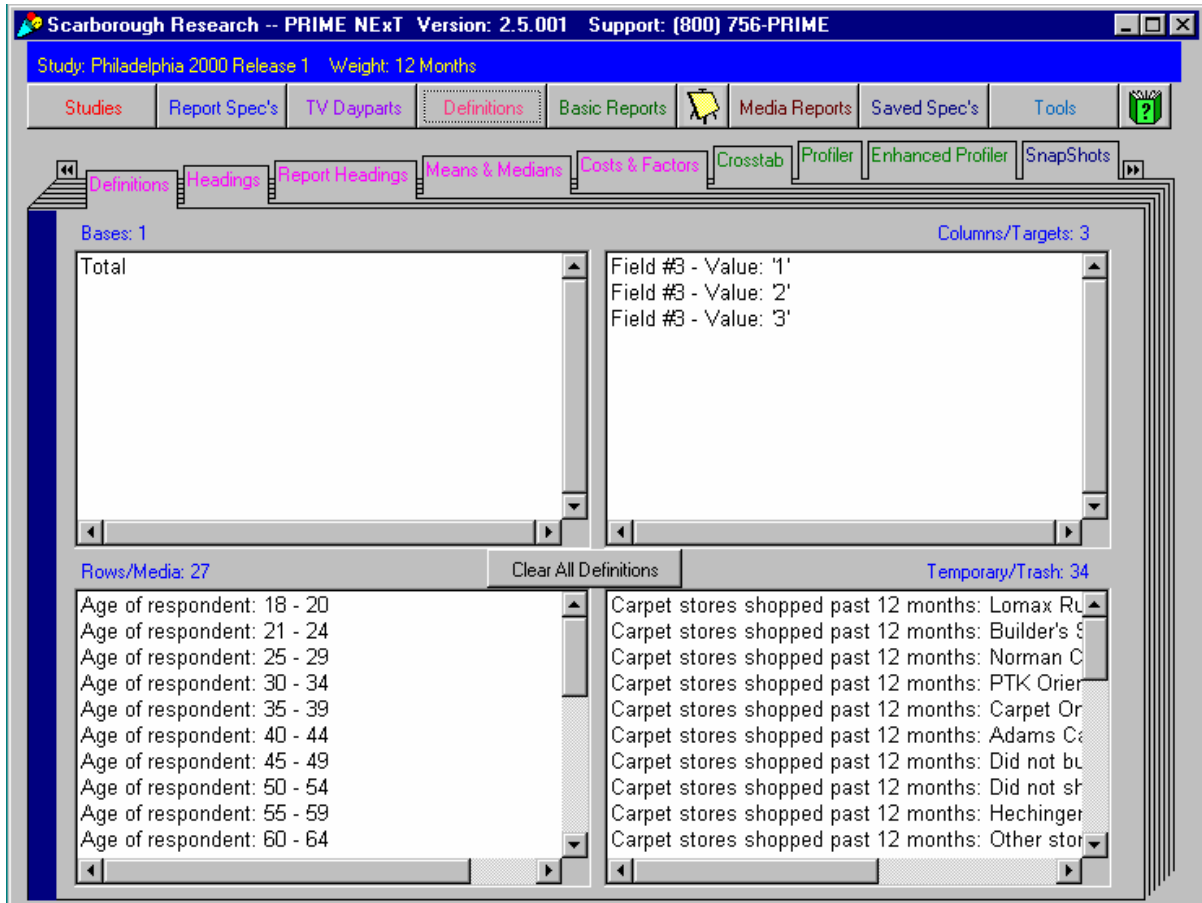
4. In the Data Imports area, select the fields you want.



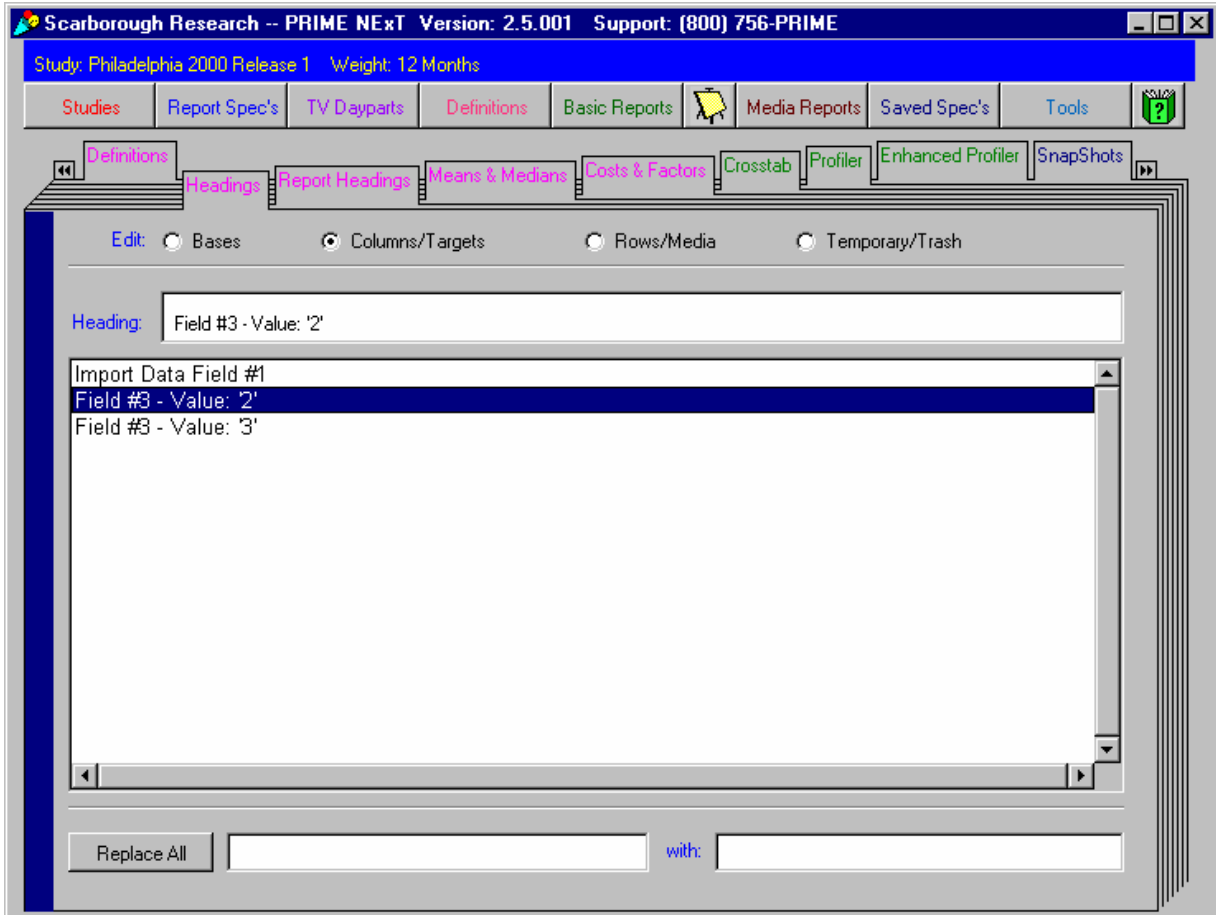
5. Click one of the "Add to" buttons. If you click Add to Database, you will see the imported data in the Rpt. Spec's – Basic screen in the User Database Elements category, as illustrated in this example:



6. To see the results, go to the Definitions tab.



7. If you want to retile headings, go to the Headings tab.



Note: If the Data Import feature is not available to you, you will see a message asking you to contact your PRIME NExT representative.
