

# Installing PRIME NExT

## Installing PRIME NExT as a Windows Application

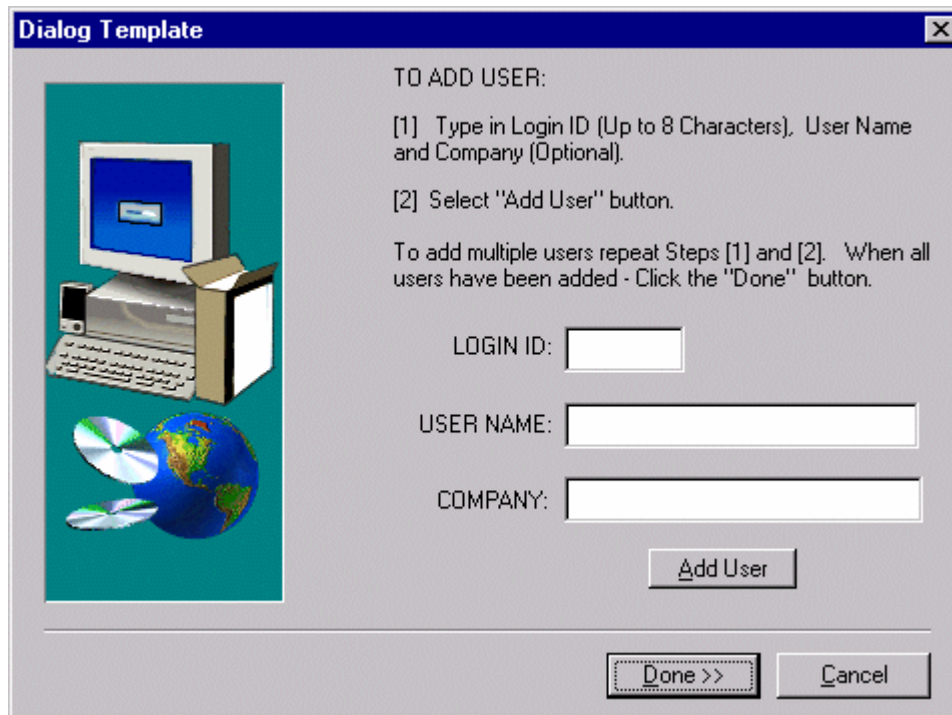
To install PRIME NExT as a Windows application:

1. Insert the PRIME NExT installation CD into your drive. The CD should start the setup program automatically.
2. If not, run *D:\setup.exe* (where *D:* is the letter assigned to your CD drive).
3. Follow the online setup instructions. The default installation directory will be C:\PRIMENXT. You can accept the default or specify any existing drive/directory to install to, provided that "\primenxt" is included as the final subdirectory in the path.
4. When asked to add a user, click the No button.

---

**Note:** You will add new users after installation.

---



5. Click the Done button to complete the PRIME NExT installation.
6. When installation is complete, install Local Market data or Total Market data.

### For Network Installation Only

Complete the following additional steps once the above installation is complete:

7. Create unique subdirectories for each PRIME NExT user with the following folders preceding the user's folder:
  - PRIMENXT\HTMLOUT
  - PRIMENXT\SAVE\PRIVATE
8. Open PRIME NExT.

9. Select the Studies tab.
10. Type in the ID of the first user and press Enter.
11. Select the User Maintenance tab.
12. Adjust the output path to add a unique user subdirectory (for example, \PRIMENXT\HTMLOUT\JOHNSMITH).
13. Adjust the private save path to add a unique user subdirectory (for example, \PRIMENXT\SAVE\PRIVATE\JOHNSMITH).
14. Click the Save User Information button.
15. Repeat steps 9 – 14 for each additional user.

## Installing PRIME NExT as an Intranet Application

See your PRIME NExT administrator for details on intranet installation.

## Installing PRIME NExT Market Studies

To install PRIME NExT Market studies:

1. Insert the PRIME NExT Market Study installation CD into your drive. The CD will start automatically.
2. When the first screen is displayed, proceed as instructed.

## PRIME NExT Folders and Files

### PRIME NExT root directory:

\PRIMENXT\	
------------	--

### Subdirectories of PRIMENXT root:

HELP	Contains PRIME NExT help system files.
HTMLOUT	Used for writing temporary output files (Note: See below for network installations).
STUDY	Used for storing PRIME NExT study files.
IMAGE	Contains the PRIME NExT software files.
SAVE	Top level subdirectory used for storing saved definition files. PUBLIC: Subdirectory under SAVE used for storing shareable saved definition files. PRIVATE: Subdirectory under SAVE used for storing restricted saved definition files (Note: See below for network installations).
DATA	Top level subdirectory used for storing PRIME NExT data files.
USERS	Used for storing user parameter files.
MACROS	Used for storing PRIME NExT macro files.

NSIVIP	Used for storing NSI VIP data.
--------	--------------------------------

**Network Installations:**

HTMLOUT	Must contain user unique subdirectories, for example, \PRIMENXT\HTMLOUT\USER1.
SAVE\PRIVATE	Must contain user unique subdirectories, for example, \PRIMENXT\SAVE\PRIVATE\USER1.

**User Files:** Contains PRIME NExT user configuration parameters—one file per user.

[USER]	User file heading.
USERNAME = Default User	User name.
CLIENTNAME = Default Client	Client name.
USERPUBLICSAVEPATH = C:\PRIMENXT\SAVE\PUBLIC\	Path for saving shareable saved definition files.
USERPRIVATESAVEPATH = C:\PRIMENXT\SAVE\PRIVATE\	Path for saving restricted saved definition files (Note: See below for network installations).
USERSTUDYPATH = C:\PRIMENXT\STUDY\	Path for PRIME NExT study files.
HTMLOUTPUTPATH = C:\PRIMENXT\HTMLOUT\	Path for writing temporary output files (Note: See below for network installations).
HTMLSERVERNAME = HTML:///C:/PRIMENXT/HTMLOUT/	Path for writing temporary output files for intranet installations.
HTMLOUTPUTBROWSER = iexplore.exe	Browser software for viewing output.
SPREADSHEET = excel.exe	Spreadsheet software for viewing output.
WORDPROCESSOR = winword.exe	Word processor software for viewing output.
HELPPATH = C:\PRIMENXT\HELP\	Path for PRIME NExT help files.
HTMLHELPPATH = HTML:///C:/PRIMENXT/HELP/	Path for PRIME NExT help files for intranet installations.
IQPMACRONAME = C:\PRIMENXT\MACROS\SNAP.XLS	PRIME NExT SnapShots application macro file (optional).
IQPMACROPATH = C:\PRIMENXT\MACROS\	PRIME NExT SnapShots application subdirectory (optional).
USERLOGOFILE = C:\PRIMENXT\MACROS\LOGO1.BMP	User logo (optional).

**Network Installations:**

USERPRIVATESAVEPATH = C:\primenxt\SAVE\PRIVATE\USER1\	Path for saving restricted saved definition files.
HTMLOUTPUTPATH = C:\primenxt\HTMLOUT\USER1\	Path for writing temporary output files.

**Study Files:** Contains PRIME NExT study parameters—one file per individual market release.

[STUDY]	Study file heading.
STUDYNAME=Anywhere 1999 Release 2	Description of study market and release.

STUDYID=an299	Unique study identifier.
RESPONDENTS=4358	Number of respondents in the study.
WEIGHT1=C:\primenxt\data\an299\an299.WGT	File containing the basic 12-month study weight.
WEIGHTNAME=12 Months	Description of basic 12-month study weight.
WEIGHT2=C:\primenxt\data\an299\an299.WGA	File containing the first 6-month study weight.
WEIGHTNAME=First 6 Months	Description of the first 6-month study weight.
WEIGHT3=C:\primenxt\data\an299\an299.WGB	File containing the second 6-month study weight.
WEIGHTNAME=Second 6 Months	Description of the second 6-month study weight.
INDEXFILE=C:\primenxt\data\an299\an299.IND	Respondent database index file.
DATAFILE= C:\primenxt\data\an299\an299.1	Respondent database.
QDFILE=c:\primenxt\data\an299\an299.QD	Category descriptions.
KWFILE=c:\primenxt\data\an299\an299.KW	Answer-level descriptions.
INDEXRECORDLENGTH=21	Length of respondent database index.
LONGCOPYRIGHTMESSAGE=Copyright Scarborough Research 1999	Copyright message – extended version.
SHORTCOPYRIGHTMESSAGE=Copyright Scarborough Res. 1999	Copyright message – abbreviated version.
RELTHRESH=70	Stability warning threshold.
RELTHRESHMESSAGE=Relatively Unstable – 36-70 Respondents	Stability warning message.
RELTHRESHCHAR=*	Stability warning flag character.
RELTHRESH=35	Instability threshold.
RELTHRESHMESSAGE=Unreliable – 35 or Fewer Respondents	Instability message.
RELTHRESHCHAR=#	Instability flag character.
PROPCODES = PC299	Proprietary data codes (optional).